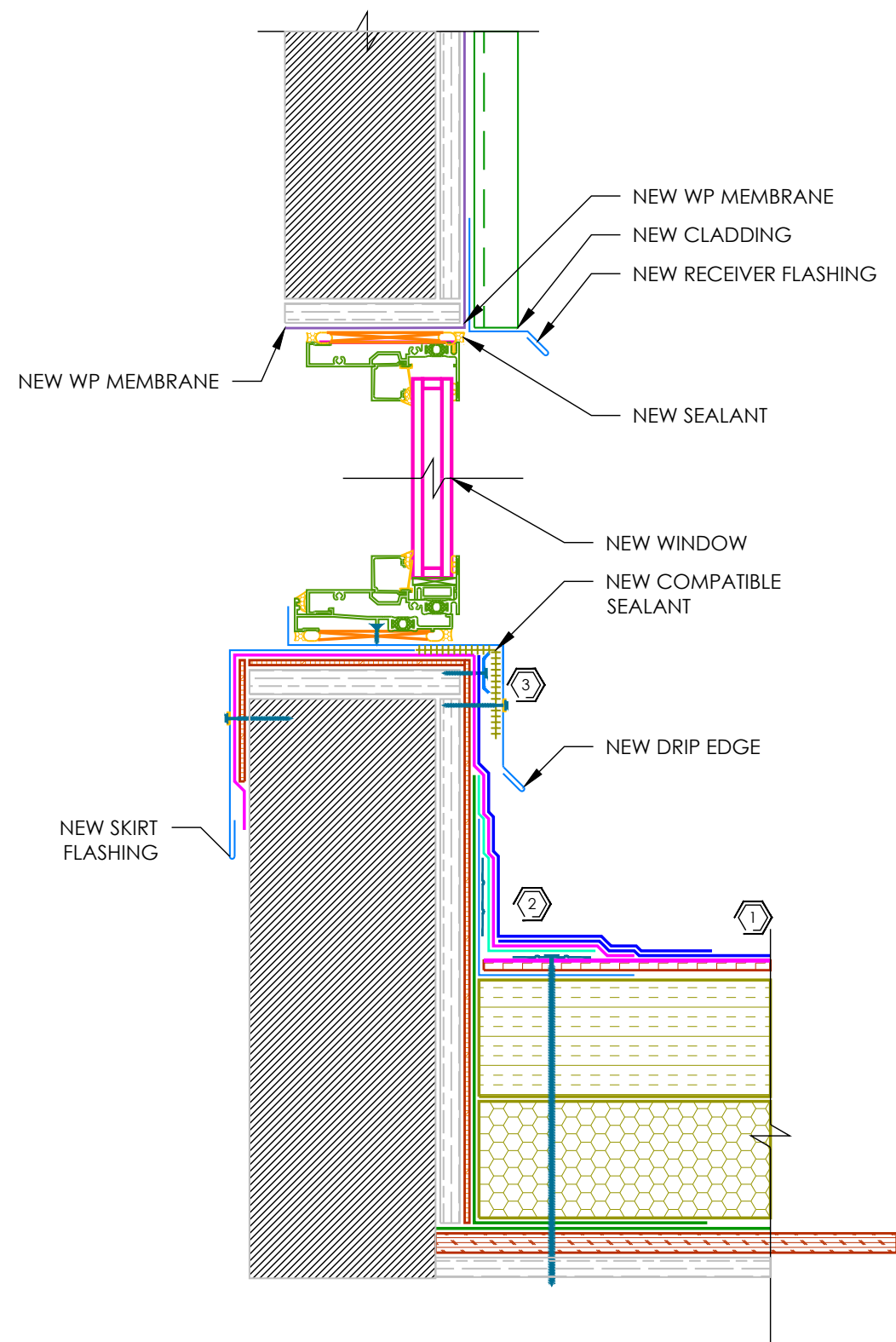


**1** BASE TERMINATION  
NTS



**2** WINDOW DETAIL  
NTS

**KEY NOTES**

1. REFER TO DETAIL 1 ON A 5.01 FOR ROOF COMPOSITION.
2. REFER TO DETAIL 2 & 4 ON A 5.01 FOR PERIMETER RESTRAINT AND BASE TIE IN
3. REFER TO DETAIL 5 ON A 5.01 FOR NEW WALL

**RMIS ENGINEERING**



389 MAXWELL CRESCENT  
Regina, SK S4N 5X9  
www.rmisen.ca  
Phone 306.352.4606  
Fax 306.352.4607



FIRE HALL #23  
C.13.MB.35-18.05.03

880 DALHOUSIE DRIVE  
WINNIPEG, MB R3T 2Z9

**CITY OF WINNIPEG**

4TH FLOOR - 185 KING STREET  
WINNIPEG, MB R3B 1J1

No.	DATE	DESCRIPTION

DESIGNED BY SMC 05/04/2018  
DRAWN BY CJB 05/04/2018  
REVIEWED BY SMC 05/04/2018

WALL AND WINDOW  
DETAILS

**A 5.06**